



FETE

**SATURDAY 25 JULY
2.00 PM – 6.00 PM**



**To be opened by David & Tony Webb
(stars of Hi-de-Hi)**



**Programme
£1**

**Lucky Number
0138**

Proceeds to be shared jointly with the Electrical and Electronics Industries
Benevolent Association and the Wherstead Church Restoration Fund.

WELCOME
to the Wherstead Park 200 Fete

Our Fete today marks the high point of a week of celebrations organised jointly by the Suffolk Branch of the Electrical and Electronic Industries Benevolent Association, the Wherstead Parochial Church Council and staff of Eastern Electricity to commemorate the 200th Anniversary of the foundation of the Old House at Wherstead Park on 19 July 1792.

The Fete is very much a family event and it is hoped that lots of children will come along to see the 'Mystery Guest' and enjoy the various activities arranged especially for them.

The Organising Committee is most grateful to the companies and individuals who have donated prizes for the event.

The Fete is being held in the grounds of Eastern Electricity's Headquarters, Wherstead Park which is currently undergoing construction work to provide further office facilities and visitors are asked particularly to take care and not enter areas where building work is being carried out.

We hope that you will enjoy your afternoon and will go away with your fair share of the many splendid prizes on offer.



FOX'S MARINA IPSWICH LTD
Your Local Marina and Boatyard
wish the Organisers of the
Electrical & Electronics Industries
Benevolent Association
and the **Wherstead Church Fund**
every success for the

WHERSTEAD PARK 200 FETE

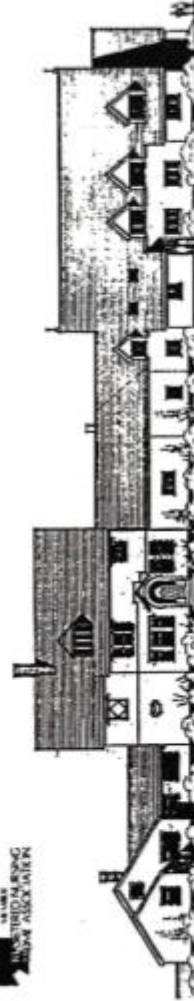
Fox's have great pleasure in
supporting these worthwhile causes

Fox's Marina Ipswich Ltd.,
The Strand, Wherstead,
Ipswich, Suffolk,
IP2 8SA

ORWELL NURSING HOME



MEMBER OF THE REGISTERED NURSING HOME ASSOCIATION

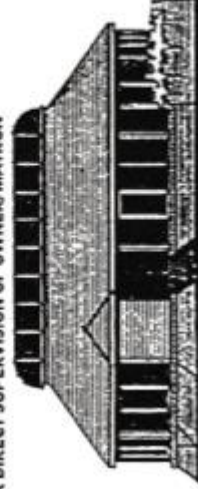


SITUATED IN BEAUTIFUL SUFFOLK COUNTRYSIDE, YET ONLY 4 MILES FROM IPSWICH TOWN CENTRE
HIGH STANDARD OF NURSING CARE, UNDER DIRECT SUPERVISION OF OWNER/MATRON

**PERSONAL ATTENTION
WITH QUALITY ASSURED**

24 HOUR NURSING CARE

- ACUTE MEDICAL • CHRONICALLY SICK • TERMINALLY ILL
- YOUNG DISABLED & GERIATRIC PATIENTS
- SINGLE AND SHARED ROOMS, MOST WITH EN-SUITE FACILITIES



LARGE TEMPERATURE CONTROLLED ATRIUM
WITH SEMI TROPICAL PLANTING
FOR PATIENTS RECREATION USE

IPSWICH (0473) 602892

REDGATE HOUSE, VICARAGE LANE, WHERSTEAD, IPSWICH IP9 2AE

JOHN T. BARRETT

WELL COTTAGE
THE STREET
WHERSTEAD
Tel: Ipswich 601129

"For all your building requirements"

We specialise in all Extensions, Alterations and Sympathetic renovations of Period Property

Contact us for PROMPT and PERSONAL Attention

"Highly recommended by all previous customers"

ANGLIA ARTISTES LTD

ENTERTAINMENT AGENCY

65 PRINCES ROAD, FELIXSTOWE, SUFFOLK

NEED TO GET YOUR ACT TOGETHER?
* BANDS * CABARET * VOCALISTS *
MAGICIANS * DANCERS * DISCOS *
AND LOTS LOTS MORE

EFFICIENT, PROFESSIONAL 23½ HOUR SERVICE

FELIXSTOWE (0394) 283159
FAX NO (0394) 276162
MOBILE (0860) 651194

JUST WHAT IS THE EEIBA?

The Electrical and Electronics Benevolent Association, which is funded by voluntary contributions from employers and individuals, is the only charity which operates specifically for staff in the electrical and electronics industries.

EEIBA helps those who have suffered misfortune. This can come in many forms and includes long term mental or physical sickness, accidents, domestic upheaval etc.

OFFICE FURNITURE AND SUPPLIES

FOR NEW AND GOOD
QUALITY USED OFFICE FURNITURE

OUR PRICES ARE FAIR AND OUR SERVICE IS
PARAMOUNT.

COME AND SEE US AT

311 FOXHALL ROAD, IPSWICH
OR TELEPHONE: IPSWICH 273338

EVANMOLE LTD

If you need to save talk to Dave...

JIM'S TAKE-AWAY

WHERSTEAD ROAD, IPSWICH

TRADITIONAL ENGLISH
FISH 'N' CHIPS



PLUS PIES, BURGERS, SCAMPL,
CHICKEN, SAUSAGES, ETC.

ALSO BAKED JACKET POTATOES,
WITH ASSORTED FILLINGS

OPEN WED TO SAT INC.
11.30 - 1.45 AND 5 pm - 11.30 pm

10% DISCOUNT UNTIL
8 AUGUST 1992
WITH THIS ADVERT

The Brook Inn

Back Lane
Washbrook
Ipswich IP8 3HR



Tel: 0473 730531

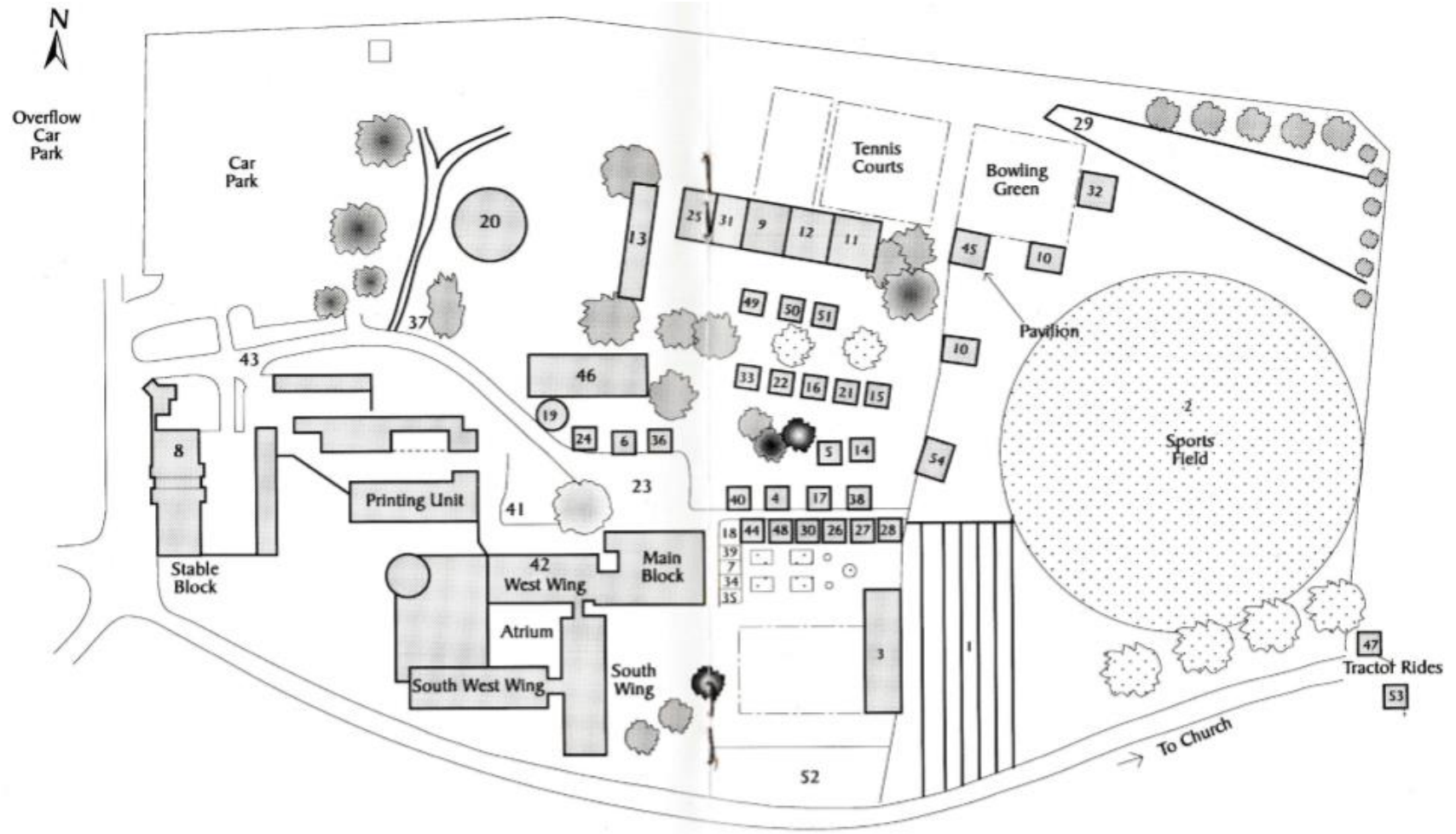
*Good food and ales served
7 days a week, Lunch and Dinner*

PROGRAMME OF EVENTS

2.00 pm	Tombola, Stalls, Sideshows, Bar and Food Stalls open.
2.15 pm	Official Opening by David and Tony Webb (Stars of Hi de Hi)
2.15 pm - 5.30 pm	Tea available
2.30 pm	Jingles and Sparky Show
3.00 pm	Pony Rides commence
3.30 pm - 5.00 pm	Cream Teas available
3.30 pm	Jingles and Sparky Show
4.30 pm	Jingles and Sparky Show
5.30 pm	Prize Draw
5.45 pm	Balloon Ascent
6.00 pm	Tombola, Stalls, Sideshows and Bar Close.

KEY TO STALLS

- | | |
|-----------------------|----------------------------------|
| 1. Donkey Derby | 28. Marbles in Flowerpot |
| 2. Hot Air Balloon | 29. Jelly Throwing Contest |
| 3. Balloon Race | 30. Wire Buzzer Stall |
| 4. Tombola | 31. Stocks |
| 5. Treasure Hunt | 32. Penalty Football Competition |
| 6. Cake Stall | 33. Human Fruit Machine |
| 7. Book Stall | 34. Produce Stalls |
| 8. Bric a Brac | 35. Badge Making Stall |
| 9. Darts | 36. Ice Cream Stall |
| 10. 2 Bouncy Castles | 37. Bygones Farm Machinery |
| 11. Rifle Range | 38. Tootingstone School Stall |
| 12. Coconut Shy | 39. Craft Stall |
| 13. Zippy Dipper Ride | 40. Suffolk Wildlife Stall |
| 14. Teddy Bears Stall | 41. Bar & Barbecue |
| 15. Unrideable Horse | 42. Cream Teas |
| 16. Sea Angler | 43. Programme Sellers |
| 17. Football Stall | 44. Raffle |
| 18. Plant Stall | 45. First Aid/Toilets |
| 19. Man on Piano | 46. Marquee |
| 20. 2 Clowns | 47. Tractor Rides |
| 21. Bubbly Stall | 48. Guess Weight of Cake |
| 22. Can Can Stall | 49. Bowling for Pig |
| 23. Mystery Guest | 50. Kill a Rat |
| 24. Doughnut Stall | 51. Ski Ball |
| 25. Crazy Golf Course | 52. Pony Rides |
| 26. Wheel of Fortune | 53. Church |
| 27. Guess Lego Bricks | 54. Public Address/Information |



Eastern Electricity Headquarters, Wherstead Park, Site Plan

Donkey Derby (situated at No. 1 on the Plan)

Come and watch the Donkey Derby races and have a flutter on your favourite donkey. Six heats will be run during the afternoon culminating in an exciting final.

Heat No:	Sponsored By:
1	Eastern Electricity, Five Rivers Area
2	Felixstowe Town Football Club
3	Eastern Electricity, Headquarters
4	Fox's Marina
5	The Pepper Run
6	Eastern Electricity, Suffolk Area
Final	Wiremec

Hot Air Balloon (situated at No. 2 on the Plan)

Do you fancy looking at the fete from a vast height? If so, have a ride in the Hot Air Balloon with our experienced pilots.



Balloon Race (situated at No. 3 on the Plan)

Buy a ticket for the Balloon Race and stand a chance of winning £100.



Clowns (situated at No. 20 on the Plan)

Jingles and Sparky will put on a show at 2.30pm, 3.30pm and 4.30pm - go along and watch the 'Demolition Derby'.



Tractor Rides (situated at No. 47 on the Plan)

Enjoy a ride on the tractor - do not miss this opportunity - the tractor will be in the lane - go through the gate at the far corner of the sports field.



Pony Rides (situated at No. 52 on the Plan) will only be available from 3 - 6pm.

BOURNE END STORES

Newsagent - Confectioner - Tobacconist - Off-Licence,
General Store - Video Club (Free Membership),
Hundreds of Top Titles available

Hours of Opening:

Monday to Saturday
6.30 am to 8.00 pm

Sunday 7.30 am to 7.30 pm

Telephone: Ipswich 601080

F. D. GOODERHAM

Building Contractor



VALE VIEW, THE STRAND,
WHERSTEAD, IPSWICH,
SUFFOLK. IP2 8NL

TELEPHONE: 0473 601841

MALCOLM ANDREW LTD

OFFICE EQUIPMENT &
FURNITURE SPECIALISTS

- * Office furniture and seating
- * Computer and systems furniture
- * Boardroom and executive furniture
- * Office and computer stationary
- * Complete office planning
- * Industrial flooring and carpet tiles

TELEPHONE: 0394 380666
FAX No. 0394 380258

WILFORD BRIDGE SPUR,
WILFORD BRIDGE ROAD, MELTON,
WOODBIDGE, SUFFOLK. IP12 1RJ

Who cares what people think about your company?

What people think about your company influences whether they decide to do business with you or not.

At Marriott Howard Publicity, we believe our prime responsibility is to take care of our clients' public image - through advertising, literature, press editorials or company stationery.

Do you care enough about your company to contact Derek Marriott, Les Howard or Colin Hullis at Marriott Howard Publicity Limited, Westbury House, 630 Woodbridge Road, Ipswich, IP4 4PG. Tel: Ipswich 715556.

MarriottHoward
Publicity Limited


Silroy



Ladies and Gents Hairdressing
Styles for all ages

R. & S. G. Clark

35 Wherstead Road, Ipswich.

 Tel: 0473 602088

Parking Available Adjacent Salon.

WHERSTEAD CHURCH

It is hoped that you will follow the diagram in the centre pages to visit our ancient church of St. Mary, which has stood for 900 years on its knoll overlooking the beautiful Orwell estuary. Organ music will be played at intervals throughout the afternoon.

Like most medieval churches, St. Mary's has been altered and beautified over the centuries by people of different times and traditions. The Domesday Survey in 1086 mentioned a church at Wherstead and there was probably a church here in Saxon times. Indeed, the huge boulders of sarsen stones, on which part of the tower rests, seem to suggest that there was a place of worship here in pre-Christian days. But about 1100 AD the earlier building was replaced by a Norman structure, as we can see from the simple 11th century north doorway and the fine 12th century semi-circular arch over the south door. The tiny early English windows towards the west end of the chancel indicate that this was probably remodelled in the late 12th or early 13th century.

The tower has been carefully restored during recent years, but most of its fabric is 15th century work. The pinnacles were replaced in 1900. From 1800 to 1902 a large copper ball, five feet in diameter, stood atop a staff at the summit of the tower, this served as a navigation mark for vessels sailing up the Orwell. Inside the church there is much of interest including some beautiful and intricate carving on the font and pulpit.

We hope that you will enjoy the great charm and atmosphere of St. Mary's Church, and feel at home there. It is a place where people of all faiths, or none, may find peace and inspiration.

The side gate indicated on the site plan will be open from 2.00 pm to 6.00 pm to provide access to the church.

GRAND DRAW

**Have you bought your
raffle tickets yet?**

**If not (or if you would like some more) you can
purchase them at the Raffle Stall situated at
No. 44 on the Plan.**

The First Prize is a

CHEST FREEZER

Other Prizes include:-

£50 Travel Voucher

**3 x Double Tickets for any
Ipswich Town Football Game**

Camera

Computer Organiser

*Come along and buy some tickets for your
chance to win one of these excellent prizes –
before 5.30 pm!*

ABOUT WHERSTEAD

Wherstead is a scattered parish. The main centre of population is the village street leading to the church and Wherstead Park. Wherstead Mansion appears in Domesday (1086) as part of the Manor of Bourne Hall, one of seven manors now in the parish of Wherstead.

The Manor of Bourne Hall was at one stage vested in the Priory of St. Peter in Ipswich, and in 1528 when the Priory was suppressed by the Pope the Manor was granted to Cardinal Wolsey, who was born in Ipswich in the early 1470s.

In 1609 the Manor of Bourne Hall was purchased by Sir Edward Coke, the Chief Justice of England, described by Trevelyan as 'one of the most disagreeable figures in our history'!

In 1780 the actual house which has been Eastern Electricity's Headquarters since 1948, changed hands for £460 and later passed into the ownership of the Horland family. Sir Robert Horland substantially extended it in 1792 at a cost of £50,000 and the grounds of the house were laid out by the famous landscape artist, Humphrey Repton, in 1792/94.

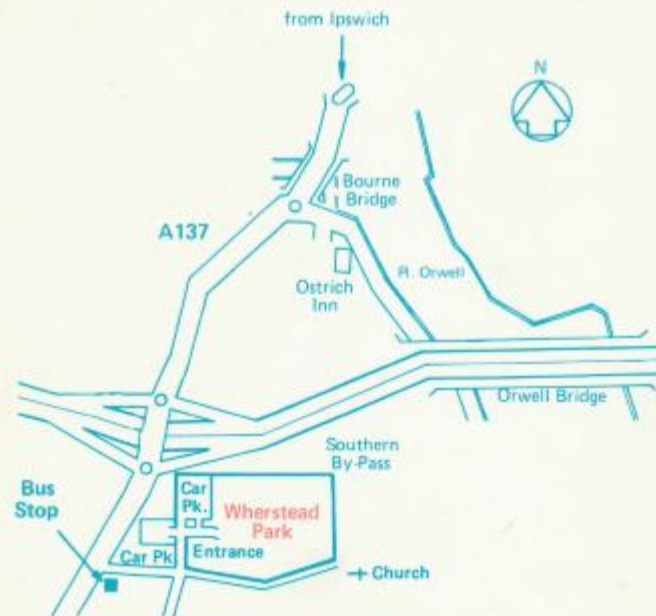
It seems likely that when the house was extended the main centre section of the present stable block was built. The origins of the stable block as a whole are unclear, but a 1637 map shows a house with some outbuildings approximately on the site of the present structures. The clock which is such an interesting feature of the block can be dated with more accuracy than the building itself. It was originally a one-faced clock, probably serving a gable end, and is one-handed, which fixes the date of its making before 1690 when the minute hand was introduced on clocks.

Restoration work, which carefully retained the character of the stable block, was completed in 1976 and at that time the clock was lovingly restored by Michael Wood and Harry Cook of Eastern Electricity. Today the stable block houses "The Room", which is used for village functions.

The house and stables changed hands many times in the 19th and early 20th centuries, and during the ownership of the Dashwood family in the first world war half the house and the stable block were converted into a hospital.

The house has been visited or occupied by many famous people in its time, including Edward Fitzgerald, Huskisson, Canning and Wellington, who accidentally shot his host, Lord Granville.

HOW TO GET TO WHERSTEAD PARK



Wherstead Park is situated adjacent to the Ipswich Southern By-pass. If you are coming by car, ample parking (at owner's risk) is available as shown on the above map.

Eastern Counties Bus Company's Service No's 94 and 95 from the Cattle Market, Stand G terminates at the end of Wherstead Street as shown above.